

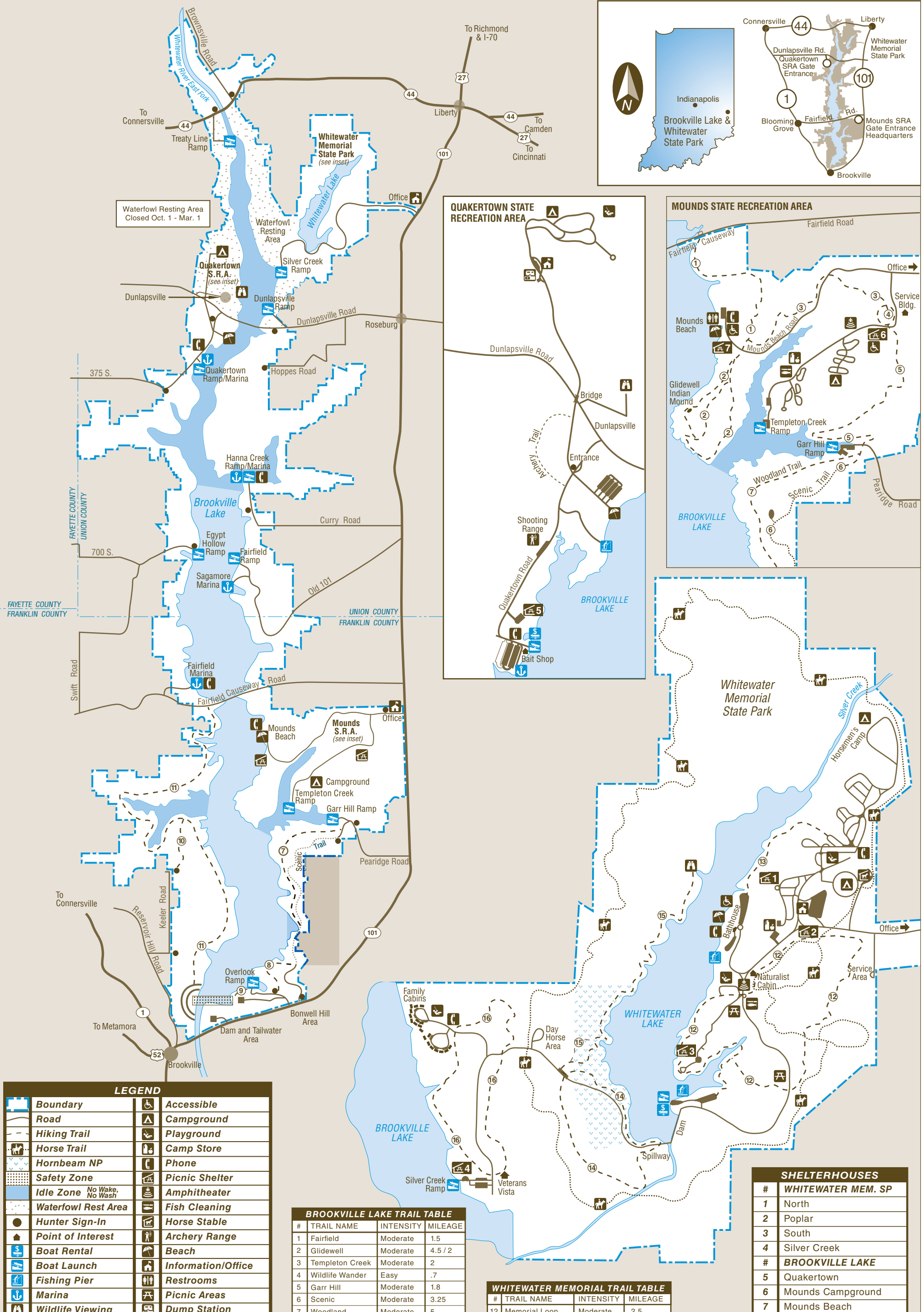
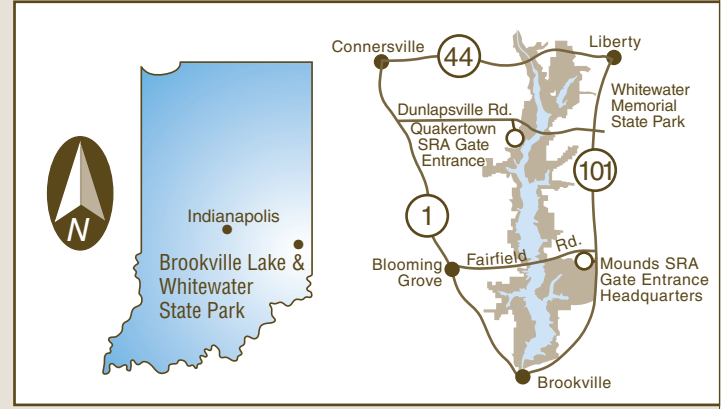
BROOKVILLE LAKE and WHITEWATER MEMORIAL STATE PARK

Brookville Lake

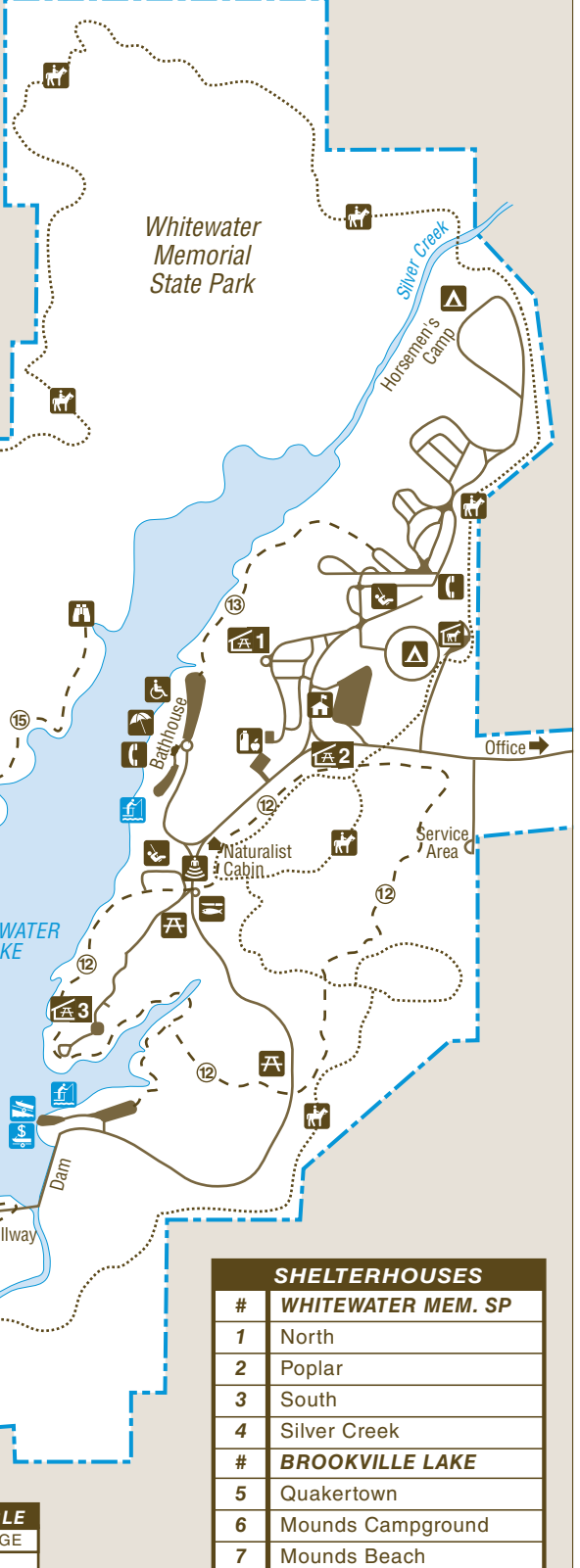
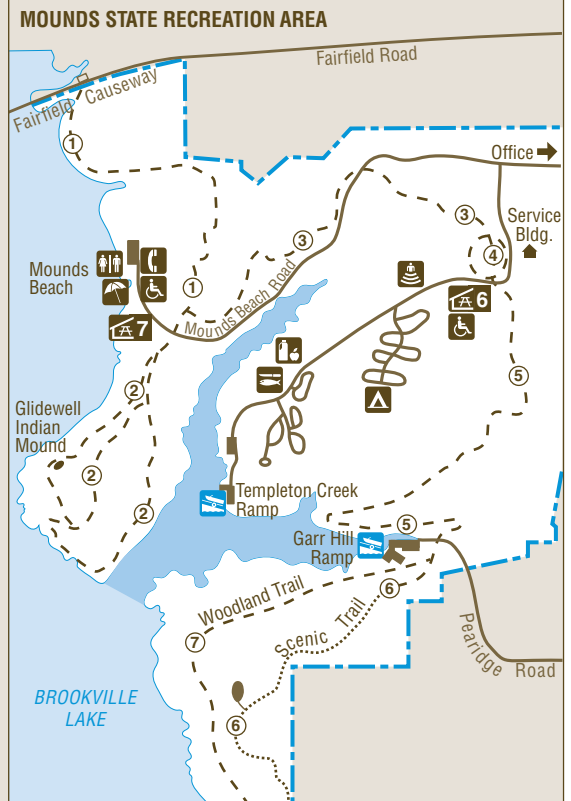
14108 State Road 101 • Brookville, IN 47012 • (765) 647-2657
11,185 Acres • 5,260 Acre Lake • Established 1975

Whitewater Memorial State Park

1418 S. State Road 101 • Liberty, IN 47353 • (765) 458-5565
1,710 Acres • 180 Acre Lake • Established 1949



Waterfowl Resting Area
Closed Oct. 1 - Mar. 1



LEGEND			
	Boundary		Accessible
	Road		Campground
	Hiking Trail		Playground
	Horse Trail		Camp Store
	Hornbeam NP		Phone
	Safety Zone		Picnic Shelter
	Idle Zone No Wake, No Wash		Amphitheater
	Waterfowl Rest Area		Fish Cleaning
	Hunter Sign-In		Horse Stable
	Point of Interest		Archery Range
	Boat Rental		Beach
	Boat Launch		Information/Office
	Fishing Pier		Restrooms
	Marina		Picnic Areas
	Wildlife Viewing		Dump Station

BROOKVILLE LAKE TRAIL TABLE			
#	TRAIL NAME	INTENSITY	MILEAGE
1	Fairfield	Moderate	1.5
2	Glidewell	Moderate	4.5 / 2
3	Templeton Creek	Moderate	2
4	Wildlife Wander	Easy	.7
5	Garr Hill	Moderate	1.8
6	Scenic	Moderate	3.25
7	Woodland	Moderate	5
8	Eagle	Moderate	2
9	Bonwell	Moderate	1.5
10	Midway	Moderate	2.2
11	Wolf Creek	Rugged	16.5

WHITEWATER MEMORIAL TRAIL TABLE			
#	TRAIL NAME	INTENSITY	MILEAGE
12	Memorial Loop	Moderate	2.5
13	Cattail Alley	Moderate	1
14	Red Springs Loop	Rugged	1.2
15	Lakeshore	Moderate	2.7 / .5
16	Veterans Vista	Moderate	2

SHELTERHOUSES	
#	WHITEWATER MEM. SP
1	North
2	Poplar
3	South
4	Silver Creek
# BROOKVILLE LAKE	
5	Quakertown
6	Mounds Campground
7	Mounds Beach

CARRY IN CARRY OUT Please carry out all trash you produce in order to keep your park clean and beautiful for others to enjoy.

Printed on Recycled Paper

RECYCLE Place used beverage cans in the park's marked recycling containers. Thank you.

ACTIVITIES AND FACILITIES

BEACHES—Swimming available at Mounds SRA, Quakertown SRA and Whitewater SP during open hours Memorial Day through Labor Day. Beaches have modern bathhouses with dressing facilities and restrooms.

BOAT RAMPS—Brookville Lake has 10; Whitewater Lake has one. Ramps range from one-lane for smaller fishing boats to large for almost any pleasure boat. All ramps have picnicking and toilet facilities.

BOATING—Brookville Lake: Unlimited horsepower and large areas of idle zone. Run-about and pontoon rentals available through private concessionaire. Whitewater Lake: Trolling-motor use only; seasonal canoe, rowboat, and paddle boat rentals available.

CAMPING—Campgrounds with modern sites, potable water and dump stations at Mounds SRA, Quakertown SRA and Whitewater SP. Non-electric, youth and non-electric horseman's camping are available at Whitewater SP. Full hookup sites (electric, water and sewage hookups) are available at the Mounds SRA. Occupancy limited to 14 consecutive nights. Reserve through the Central Reservation System.

MODERN FAMILY CABINS—Available year-round at Whitewater SP. Guests furnish linens. Renter must clean and leave ready for next occupants. Maximum six persons per cabin. Occupancy limited to 14 consecutive nights. Two cabins are handicapped accessible; the others are not. Two cabins allow pets; the others do not. All are non-smoking. Must be age 21 to rent. Reserve through the Central Reservation System.

HIKING—Over 50 miles of hiking trails ranging from easy to rugged.

MARINAS—Fairfield has seasonal mooring in both buoys and slips, as well as on-water fuel and ice. Hanna Creek has 76 slips for sailboats only. Quakertown has seasonal mooring in both buoys and slips, as well as on-water fuel, ship store, boat pump-out and boat rental. Kent's Harbor has seasonal mooring, on-water fuel, ship store, boat rental and restaurant.

PICNIC AREAS—Available in a number of areas. Most have tables and toilet facilities. Seven shelter houses are available: two at Mounds SRA, one at Quakertown SRA, and four at Whitewater SP. Reserve through the Central Reservation System.

FISHING—Brookville Lake: Walleye, muskellunge, striped bass, smallmouth bass, largemouth bass, bluegill, crappie, and catfish. Whitewater Lake: largemouth bass, bluegill, redear, crappie, and catfish. State fishing license required.

RULES AND REGULATIONS

- **Whitewater SP:** No one shall injure or damage any structure, rock, tree, flower, bird or wild animal. Do NOT gather limbs, brush or trees (either dead or alive) for firewood because they rebuild the natural humus.
- **Firearms—Whitewater SP:** Except lawfully possessed handguns, any firearm, BB gun, air gun, CO₂ gun, bow and arrow, paint gun or spear gun must be unloaded or un-nocked and stored in a case or locked within a vehicle, except when an owner is participating in an activity authorized by written permit. **Brookville Lake:** Handguns are prohibited. Any firearm, BB gun, air gun, CO₂ gun, bow and arrow, paint gun or spear gun must be unloaded or un-nocked and stored in a case or locked within a vehicle, except in accordance with the terms of a valid one-day hunting permit for a specified date. A hunting map is at stateparks.IN.gov.
- No person shall conduct or participate in a fishing tournament on a reservoir property administered by the Division of State Parks except under a license.
- No person shall launch, dock, or moor a watercraft or other floating device, except during approved periods and at sites designated by the department for those purposes. No person shall leave watercraft unattended in a courtesy dock.
- A person who possesses a pet must attend it at all times and keep the animal caged or on a leash no more than 6 feet long, except when used for the lawful pursuit of wild animals.
- Vending or advertising without permission of the DNR is prohibited.
- Camping is permitted only in the campground. Youth groups must be under adult supervision. No lakeshore camping.
- Fires shall be built only in designated places.
- Please comply with the Carry In/Carry Out trash policy in all day-use areas. Overnight guests must put waste in receptacles provided for that purpose.
- Motorists shall observe posted speed limits and park only in designated areas.
- Swimming is limited to places and times designated by the DNR.
- No person shall possess or consume alcoholic beverages at a swimming beach.
- Drinking water should be taken only from pumps, hydrants or fountains provided for that purpose. This water is tested regularly for purity.
- Report lost or found articles to the park office.
- All motorized vehicles shall remain on paved roadway. Snowmobiles are prohibited.
- Metal detectors are allowed on main beach between Labor Day and Memorial Day with written permission from the property manager.
- Park closes from 11 p.m. until 7 a.m. No one is allowed in the park between these hours, except for anglers, campers and cabin guests with a receipt or key, using their sites.

HUNTING—Upland game and waterfowl available on Brookville property during open seasons. Indiana Hunting license required.

HORSES—At Whitewater SP, seasonal guided trail rides available from concessionaire saddle barn. Nine miles of bridle trails available for day horse riders or horse campers.

INTERPRETIVE NATURALIST SERVICE—Hikes, talks and other fun programs available from Memorial Day to Labor Day. Schedules by request at state property or at InterpretiveServices.IN.gov.

DESCRIPTIONS OF TRAILS

1. **Fairfield** (1.5 miles) MODERATE—Extends from southwest end of Fairfield Causeway to Mounds Beach Road, traveling by lakeshore through old pine plantation and crop fields.
2. **Glidewell** MODERATE—Has a long and short loop past a 2,000-year-old Native American mound. Long loop is 4.5 miles; Short loop is 2 miles.
3. **Templeton Creek** (2 miles) MODERATE—Parallels Mounds Beach Road then crosses Templeton Creek and up to the Wildlife Wander Trail.
4. **Wildlife Wander** (.7 mile) EASY—Self-guided short loop through mature woods. Brochures available by trail sign.
5. **Garr Hill** (1.8 miles) MODERATE—Goes through crop fields and woods to the Garr Hill Boat Ramp.
6. **Scenic** (3.25 miles) Moderate—Great for bicycle riding and rollerblading. Goes from Garr Hill to Scenic Vista.
7. **Woodland** (5 miles) MODERATE—Wooded alternative parallel to paved Scenic Trail.
8. **Eagle** (2 miles) MODERATE—Travels through beautiful mature woods to Bonwell Ramp road. To continue on Bonwell Trail, cross road and walk to far corner of parking lot.
9. **Bonwell** (1.5 miles) MODERATE—Connects Bonwell to top of dam. To continue Adena Loop, cross the dam to Wolf Creek Trail.
10. **Midway** (2.2 miles) MODERATE—Easy access to Wolf Creek Trail. Access trailhead at small parking lot at end of Keeler Road.
11. **Wolf Creek** (16.5 miles) RUGGED—Primitive trail traversing hills and ravines on west side of Brookville Lake, crossing no public roads or buildings. Ends at Fairfield Causeway. Beautiful lake views in spring and fall. To pick up Fairfield Trail, continue back to east side.

CENTRAL RESERVATION SYSTEM



Reservations for all types of camping, family cabins, and shelters at state parks, reservoirs and forests can be made online or by calling toll-free.

Online: camp.IN.gov
Call: **1-866-6campIN**
(1-866-622-6746)

Reservations for the Indiana State Park Inns and Inn-operated cabins can be made online or by calling toll-free.

Reservations: **1-877-lodges1**
(1-877-563-4371)
Online: IndianalInns.com

FOR MORE INFORMATION



Write: Brookville Lake
14108 State Road 101
Brookville, IN 47012

Call: (765) 647-2657
(765) 647-2658

Write: Whitewater Memorial State Park
1418 S. State Road 101
Liberty, IN 47353

Call: (765) 458-5565
Online: dnr.IN.gov

SPECIAL NOTE

Receipts from admission and service charges are used to help defray the operation and maintenance costs of the lake. List of fees available in the lake office.

The programs, services, facilities, and activities of the Indiana Department of Natural Resources are available to everyone. DNR prohibits discrimination on the basis of race, color, national origin, age, sex, or disability. If you believe that you have been discriminated against in any program, activity, or facility as described above, or if you desire further information please write to: Department of Natural Resources, Executive Office, 402 W. Washington Street, W256, Indianapolis, IN 46204, (317) 232-4020.



Please carry out all trash you produce in order to keep your park clean and beautiful for others to enjoy!

12. **Memorial** (2.5 miles) MODERATE—Easily accessed from many different locations. Travels eastern shore of Whitewater Lake through variety of forest types.

13. **Cattail Alley** (1 mile) MODERATE—Accesses family campground to beach area of Whitewater Lake. Northwest end is marked by acres of cattails, providing habitat for many species of waterfowl and other birds.

14. **Red Springs Loop** (1.2 miles) RUGGED—Loop trail can be accessed from spillway or Nature Preserve parking lots. Majority of trail meanders through Hornbeam Nature Preserve and past large hillside seep springs that leave minerals and iron deposits, casting a rusty color over surface water. Wonderful trail for spring wildflowers.

15. **Lakeshore** (2.7 miles) MODERATE—The short loop and longest trail starts and ends at Hornbeam Nature Preserve parking lot, traversing hills and valleys of beautiful hardwoods along Whitewater Lake's western shore. Half-mile short loop is at beginning—watch for wooden signs. Long trail turns around at wooden steps and observation deck.

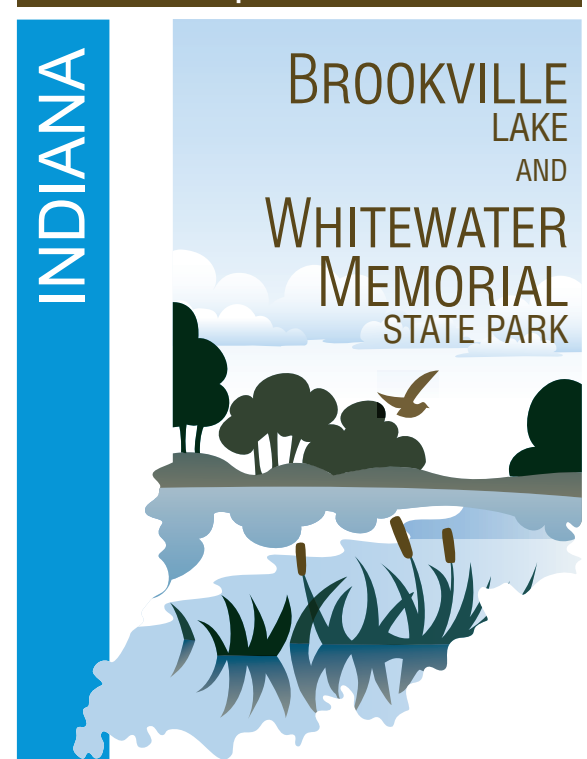
16. **Veterans Vista Loop** (2 miles) MODERATE—This trail offers a spectacular view of Brookville Lake, winding through fields and forests in the Silver Creek and Family Cabin areas.

Bridle Trails (9 miles) A large loop trail traverses the edge of the property and can be accessed from day Horsemen's Area or Horsemen's Campground. Saddle barn trail is exclusively for saddle barn patrons.

**PLEASE STAY ON MARKED TRAILS.
HORSES MUST STAY ON DESIGNATED HORSE
TRAILS AT ALL TIMES.**

Please let wild animals remain wild. Feeding deer is prohibited. Feeding of wild animals can result in harm to both animals and people. Animals who depend on handouts become a nuisance to visitors and a danger to themselves. Please lock up all food and coolers inside cars or campers. Roll up car windows tightly.

DNR Indiana Department of Natural Resources



Brookville Lake provides flood control in the Whitewater Valley and helps reduce flood flows in the Ohio River. The lake also was developed for fish and wildlife, recreation, and municipal and industrial water supply. The lake is in Franklin and Union counties in southeastern Indiana on the east fork of the Whitewater River.

Whitewater Memorial State Park was established in 1949 to honor those who served in World War II. Fayette, Franklin, Union and Wayne counties acquired the initial acreage, which includes wooded rolling hills; steep ridges and ravines; level, open fields; and a manmade lake. The park's Hornbeam Nature Preserve includes an unusually high number of hornbeam and hop hornbeam trees. In spring, the forest is covered with wildflowers.